

CLIENT:

PRODUCT:

LOCATION:

MARÉCHAL HIGH SCHOOL

MIPOLAM PLANET | 5,200 yd²

MIRABEL, QC | 2024

Gerflor solutions at Maréchal High School

As part of the construction of a new high school in Mirabel, the design team sought a flooring solution that would combine durability, safety, and aesthetics, to provide a learning environment that is both functional, long-lasting, and welcoming for students and staff.

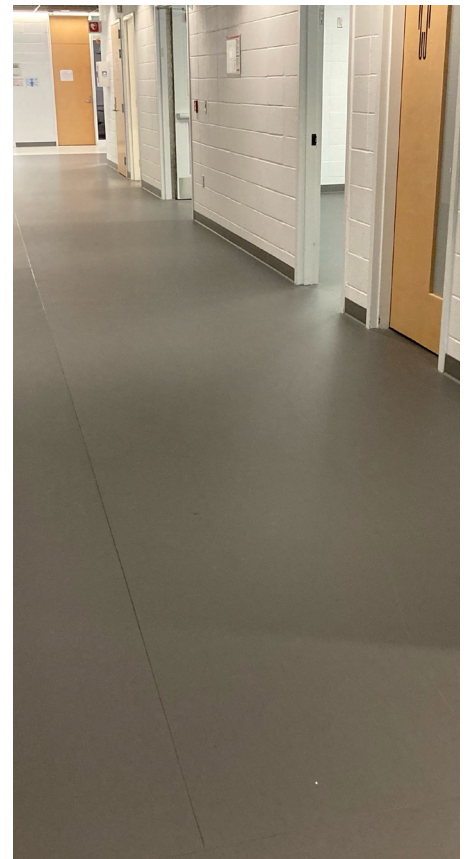
Using **Mipolam Planet**, the project aimed to reflect a modern design while meeting all the requirements of a school setting: ease of maintenance, resistance to heavy foot traffic, comfort, and strong environmental performance.

This homogeneous flooring, well known for its durability and easy maintenance, was installed across a surface of 5,200 square yards. The colour selection of **5411 Atlantic Grey**, **5455 Lava Flow** and **5426 Shadow** help create a clean, modern, and uniform atmosphere, perfectly suited to the needs of a new educational facility.





Mipolam Planet contributed to a modern, durable, and easy-to-maintain school, offering excellent walking comfort and daily wear resistance. The product proved to be an ideal match for this brand-new building designed with future generations in mind.



For further information on Gerflor's extensive range of flooring solutions, please contact us: