

CLIENT:**PRODUCT:****LOCATION:**

CANADORE COLLEGE AVIATION CAMPUS

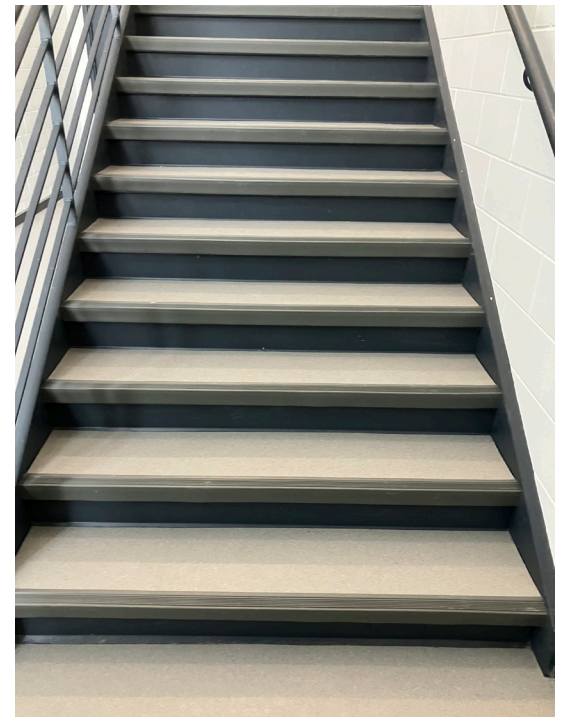
GTI MAX CONNECT | 0259 Grecale | 4,500 ft²

NORTH BAY, ON | 2025

Gerflor solutions at Canadore College Aviation Campus in North Bay, ON

GTI Max Connect - 0259 Grecale was selected for its outstanding resistance to rolling loads, glue-free installation, and its ability to be laid directly over existing flooring. Its clean, professional finish makes it well suited to a high-performance learning environment.

GTI Max Connect provided a reliable, high-performance solution tailored to the technical and functional needs of the college. The result is a durable, clean, and easy-to-maintain floor, perfectly suited to the daily demands of an aviation training facility.



For further information on Gerflor's extensive range of flooring solutions, please contact us: